

INVASIVE SPECIES

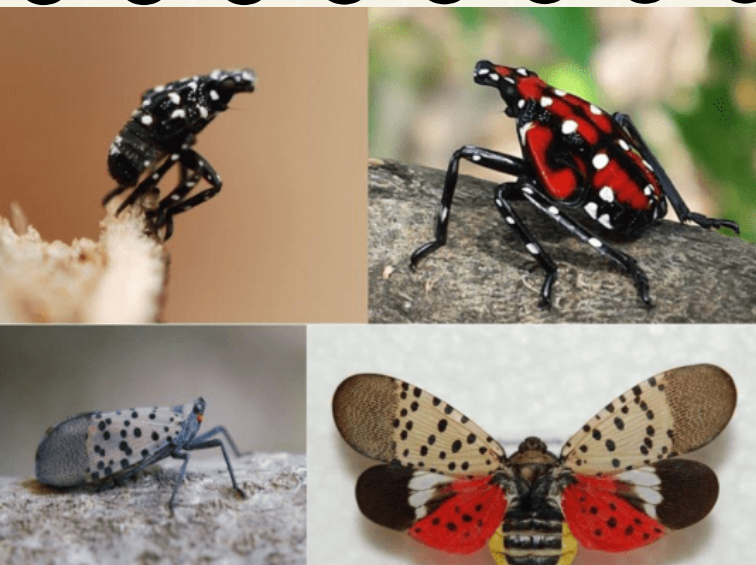
Spotted Lanternfly

Lycorma delicatula



ORIGINATED

Native to China, Vietnam, and India. It first appeared in the US five years ago, when a shipment of stones from Asia arrived in Berks County, PA with lanternfly eggs.



BREEDING SEASON

From late April to early May, nymphs hatch from their egg cases. By July, adults can be seen as they mate and lay eggs through the onset of winter.

CROP DAMAGE

New Jersey being the Garden State has the potential of having many problems with these small invaders. The sugary waste fluid they produce coats leaves and stems, and this can encourage mold growth.



HOW TO HANDLE THEM

The lanternfly will lay egg masses of 30 - 50 eggs on any smooth-trunked tree or stone. It is best to scrape off the eggs into a plastic bag with alcohol. Killing the nymphs and adults can be hard, so you'll need to really squish them dead.

Did you know we actually jump instead of fly!

We use our legs to jump high and use our wings to glide.

